



HOUSE & LAND

\$592,600*

GRANDE VUE – DROUIN

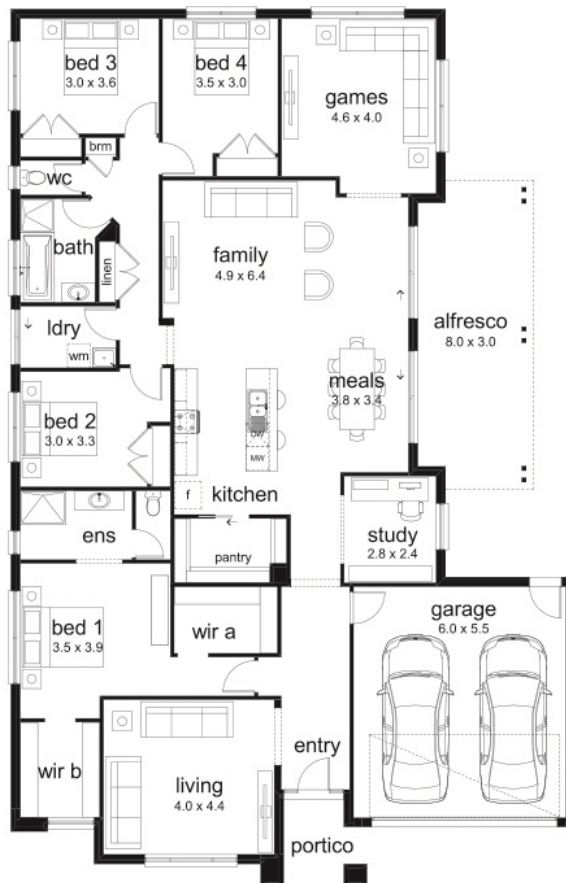
Lot 59 Telford Rise
Drouin VIC 3818

🚗 4 🏠 2 🚗 2 🛋️ 3 📺 1 🏠 1

Cobaine 31 Livia Facade
(Aspirations)

Home size: 31sq Land size: 676m²

- ✓ Aspirations Inclusions
- ✓ Site Costs Allowance
- ✓ NBN Connection
- ✓ Double Garage
- ✓ Sectional Garage Door
- ✓ 900mm Appliances
- ✓ Ducted Heating
- ✓ Floor Coverings
- ✓ 35 m2 of Concrete Drive and Paving
- ✓ Current Promotion



Grande Vue
DROUIN

Go to dennisfamily.com.au or call
1800 DENNIS for more information.

Louise Testro 0419 934 907
Reference HL0027551