



a family building homes for families™



HOUSE & LAND

\$525,200*

GRANDE VUE – DROUIN

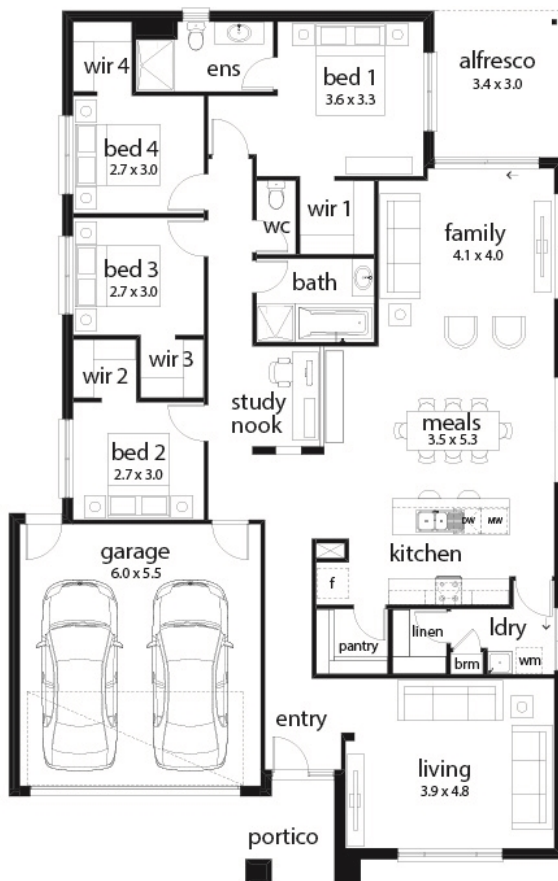
Lot 68 Leura Street
Drouin VIC 3818

🚗 4 🏠 2 🚗 2 🚗 2 🏠 1

Pearl 24 Melba Facade
(Aspirations)

Home size: 24.42sq Land size: 694m²

- ✓ Aspirations Inclusions
- ✓ BAL
- ✓ Site Costs Allowance
- ✓ NBN Connection
- ✓ Double Garage
- ✓ Sectional Garage Door
- ✓ Remote control to garage door
- ✓ Flyscreens
- ✓ 900mm Appliances
- ✓ Ducted Heating
- ✓ Floor Coverings
- ✓ 35 m² of Concrete Drive and Paving
- ✓ Current Promotion



Go to dennisfamily.com.au or call
1800 DENNIS for more information.

Louise Testro 0419 934 907
Reference HL0027171

1. Illustrations, photographs and images of homes constructed by Dennis Family Homes: a. may include options and upgrades that are available at an additional cost; b. may include items such as landscaping and gardens, driveway, paving, decking and fencing not supplied by Dennis Family Homes, unless otherwise stated. 2. Price based on the facade type as illustrated. 3. All house and land packages are only available for the specified lot and home advertised and is only available until sold. 4. Final designs, inclusions, and options included in package may change from the information provided and may be varied by Dennis Family Homes without notice. 5. Prices published: a. are correct at the time of publishing but may change without notice after the date of printing; b. do not include stamp duty, legal fees or any other costs incurred in connection with the purchase. 6. Specific Developer of the Estate requirements are excluded unless otherwise stated. Additional costs may be incurred based on BAL zoning assessment. 9. Package offering not available in conjunction with any other offer. 10. House and land packages are subject to land availability which may change at any time without notice. Visit dennisfamily.com.au for full terms and conditions. For specific details/allowances relating to items included within this house and land package or our home your land offer, please refer to a Dennis Family Homes Sales Consultant. Dennis Family Homes Pty Ltd (ABN 83 056 254 249).