



HOUSE & LAND

\$567,600*

GRANDE VUE – DROUIN

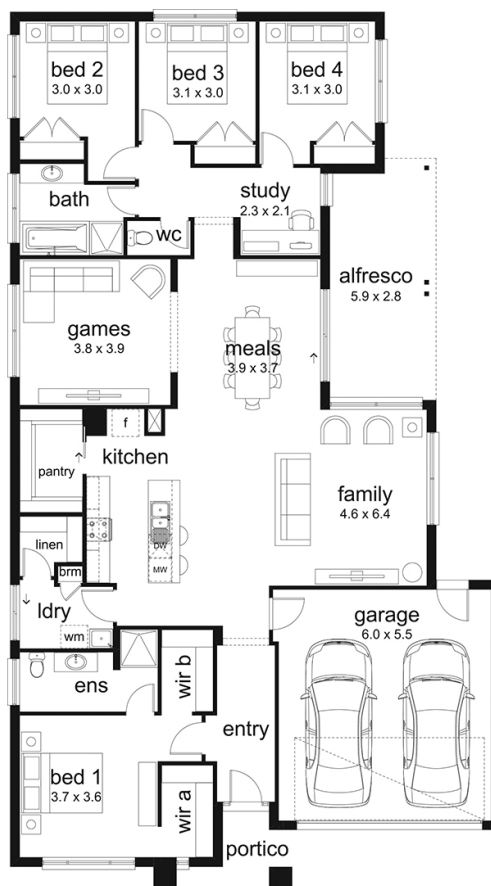
Lot 83 Telford Rise
Drouin VIC 3818



Morrison 27 Livia Facade
(Aspirations)

Home size: 26.86sq Land size: 652m²

- ✓ Aspirations Inclusions
- ✓ BAL
- ✓ Site Costs Allowance
- ✓ NBN Connection
- ✓ Double Garage
- ✓ Sectional Garage Door
- ✓ 900mm Appliances
- ✓ Ducted Heating
- ✓ Floor Coverings
- ✓ 35 m2 of Concrete Drive and Paving
- ✓ Current Promotion



Grande Vue
DROUIN

Go to dennisfamily.com.au or call
1800 DENNIS for more information.

Louise Testro 0419 934 907
Reference HL0027553