



HOUSE & LAND

\$543,000*

GRANDE VUE – DROUIN

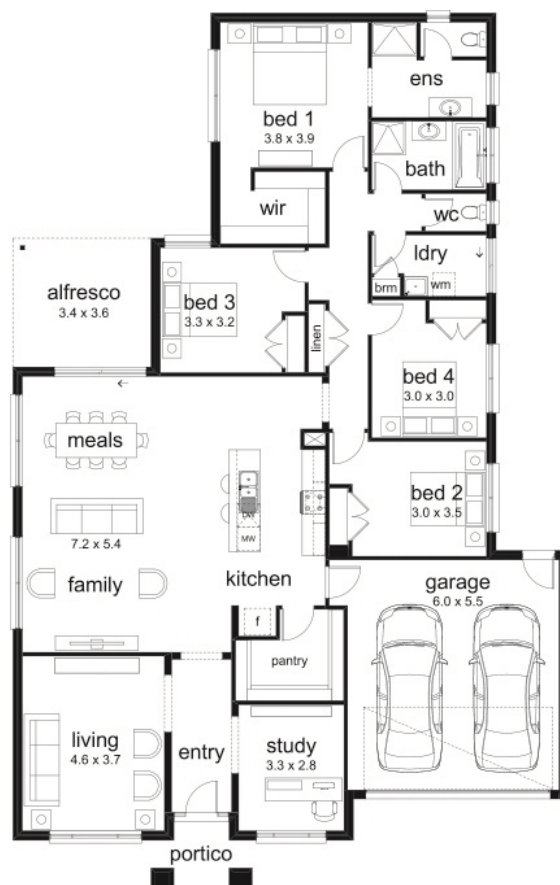
Lot 91 Sutcliffe Mews
Drouin VIC 3818

 4
  2
  2
  2
  1
  1

Finlay 27 Livia Facade
(Aspirations)

Home size: 27.26sq Land size: 674m²

- ✓ Aspirations Inclusions
- ✓ Site Costs Allowance
- ✓ NBN Connection
- ✓ Double Garage
- ✓ Sectional Garage Door
- ✓ 900mm Appliances
- ✓ Ducted Heating
- ✓ Floor Coverings
- ✓ 35 m2 of Concrete Drive and Paving
- ✓ Current Promotion



Grande Vue
DROUIN

Go to dennisfamily.com.au or call
1800 DENNIS for more information.

Louise Testro 0419 934 907
Reference HL0027558